



STRATA

SUPERIOR WELDING PRODUCTS



ADVANCEMIG 255C PACK

INVERTER MULTI-PROCESS WELDER WITH INTEGRATED TROLLEY & STORAGE

With IGBT and PFC technology the ADVANCEMIG 255C pack includes a multi-process welder to suit a range of jobs; a must have for the industry professional. The ADVANCEMIG 255C welder itself has high quality overspecified electronics and extreme stress testing up to 440V and IP23 protection, meaning this machine is built to withstand the harshest of environments found in the NZ workplace.

Welder

- IGBT Inverter technology for smooth & stable welding output
- 4 Roll geared metal wire feeder unit provides a powerful and smooth wire feed
- Digital microprocessor control system with superior & dynamic arc characteristics
- Increased duty cycle and energy efficiency with active PFC technology
- Multi voltage input - will operate with wide range of input voltage, can even be used with long extension leads
- Smart full colour LCD display for a clear and intuitive display of parameters
- Synergic MIG operation with parameter save/recall, an intuitive, simple setting of controls for consistent welding results
- Remote control spool gun connection gives effective results welding with soft wires such as aluminium. Suitable for MIG brazing with bronze wires.
- Lift TIG operation with down slope and remote current control ability.
- Great control MIG welding with adjustable pre flow, post flow, burn back and soft start settings
- Reversible polarity for gas & gasless MIG welding.

- MIG waveform gives good control of the arc for smooth welding results
- Lightweight & compact design ideal for portable applications
- Extreme stress tested in production up to 440V, ensuring rugged reliability
- Industrial IP23 casing with front panel protection, resists damage, moisture and corrosion
- Durable and reliable with high quality & over specified electronic components
- Intelligent protection system with temperature, voltage and current sensors for increased reliability & safety
- Designed to work with generator power supply with protection from power surges.
- Quick connect inlet gas fitting

Trolley w/ Storage Unit (#32673)

- Handy-sized trolley, heavy duty wheels making it super portable
- Multiple enclosed compartments for safe storage

15 AMP PLUG	CONSTANT CURRENT/ VOLTAGE	DIRECT CURRENT	LCD SCREEN	230V 50HZ SINGLE PHASE	SPOOL GUN READY	INTELLIGENT PROTECTION SYSTEM	IGBT INVERTER TECHNOLOGY	SPIKE/ GENERATOR SAFE	CORROSION RESISTANT	LIFT TIG	POWER FACTOR CORRECTION
-------------	---------------------------	----------------	------------	------------------------	-----------------	-------------------------------	--------------------------	-----------------------	---------------------	----------	-------------------------

DIMENSIONS (LxWxH)	WEIGHT	INPUT POWER SUPPLY	INPUT POWER SUPPLY TOLERANCE	MAXIMUM INPUT CURRENT	GENERATOR CAPACITY	MIG OUTPUT VOLTAGE	MIG OUTPUT CURRENT	MIG DUTY CYCLE	WIRE FEEDING SPEED	MMA CURRENT OUTPUT	MMA O/C VOLTAGE	MMA DUTY CYCLE	INSULATION CLASS
680 x 230 x 445mm	25kg	230V AC 15A 50/60Hz	90 - 275V	41A	10kVA	10 - 30V	25 - 250A	250A@16% 195A@60% 150A@100%	2.4 - 18 m/min	10 - 250A	65V	250A@13% 180A@60% 140A@100%	IP23

POWER EFFICIENCY	POWER FACTOR	STANDARDS	MIG DRIVE ROLLERS AVAILABLE	MIG WIRE SPOOL SIZE	MMA ROD SIZE	WARRANTY
80%	0.99	EN60974-1: 2012	V Groove: 0.6 /0.8/0.9/1.0mm Knurled: 0.8/0.9/1.0mm U Groove: 0.8/1.0mm	D200mm/ D300mm 5kg /15kg	1.6 -5.0mm	36 months








STRATA

SUPERIOR WELDING PRODUCTS



ADVANCEMIG 255C MIG WELDING ACCESSORIES & CONSUMABLES

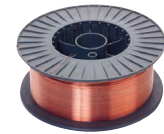
- Standard ● Optional
☆ Common Consumables

ACCESSORY:	ADVANCEMIG 255C:
Arc Leads 	○ AAL3550
Earth Leads 	○ AEL3550
MIG Torch 	○ MT240-4E
Argon Regulator 	○ GR101AR
Gas Hose 	○ GH08
MIG Starter Kit	● MB24KIT
TIG Torch	● 17374
Spool Gun	● SP240P
TIG Consumables Kit	● DCKIT
Drive Roller 'V' Groove 0.6 - 0.8mm	○ 17835 (x 2)
Drive Roller 'V' Groove 0.9 - 1.0mm	○ 17836 (x 2)
Drive Roller 'V' Groove 1.0 - 1.2mm	-
Drive Roller 'U' Groove 0.8 - 1.0mm	● 17841 (x 2)
Drive Roller 'U' Groove 1.0 - 1.2mm	-
Drive Roller 'U' Groove 1.2 - 1.6mm	● 17842 (x 2)
Drive Roller Knurled 0.8 - 0.9mm	○ 17838 (x 2)
Drive Roller Knurled 1.0 - 1.2mm	● 17839 (x 2)
Drive Roller Knurled 1.2 - 1.6mm	● 17840 (x 2)
MIG Tips (MMT) 0.6 - 1.6mm	☆ 0.6, 0.8, 0.9, 1.0, 1.2, 1.6mm
MIG Shrouds (MCN) 70 = Conical 71 = Cylindrical	☆ MCN2470 MCN2471
Tip Adaptors (MTA) 81 = M6	☆ MTA481

Mild Steel MIG Wire - ER70S-6

- Copper coated MIG wire for general purpose welding of mild steel using CO₂ or argon based shielding gases.

CODE:	DESCRIPTION:
MW5KG06	5kg Spool - 0.6mm MIG wire (D200)
MW5KG08	5kg Spool - 0.8mm MIG wire (D200)
MW5KG09	5kg Spool - 0.9mm MIG wire (D200)
D300 MW15KG08S	15kg Spool - 0.8mm MIG wire (D300)
D300 MW15KG09S	15kg Spool - 0.9mm MIG wire (D300)
D300 MW15KG10	15kg Spool - 1.0mm MIG wire (D300)
D300 MW15KG12	15kg Spool - 1.2mm MIG wire (D300)



Welding Magnets

WT-WMG03	3" Welding Magnet
WT-WMG05	5" Welding Magnet



Chipping Hammer

- Heavy duty chipping hammer for the trade

WT-SPCH	Spring Handle Chipping Hammer
---------	-------------------------------



Industrial Storage Trolley

- Pull out drawer with storage, 25.85kg

32673	Integrated Trolley to suit Compact MIG Models
-------	---



Automatic Welding Helmets

- Variable Shade • Complete with batteries ready to go
- Suitable for automotive DIY and industrial use.

SV3000	Auto Welding Helmet, Shade 5 - 13 + Grind Function (MIG/TIG/MMA/Plasma)
SV4000	Auto Welding Helmet, Shade 4 - 13 + Grind Function (MIG/TIG/MMA/Plasma)
DW7000XL	Auto Welding Helmet, Shade 5 - 13 + PRSL Filtration System (MIG/TIG/MMA/Plasma)



SV3000



SV4000



DW7000XL comes with battery powered air respirator.